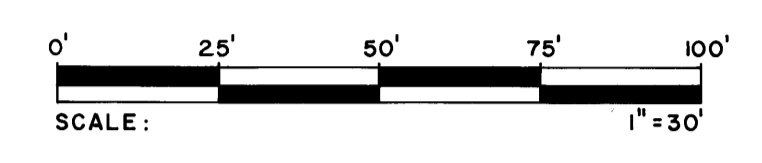


PLAT OF JILLWOOD ACRES

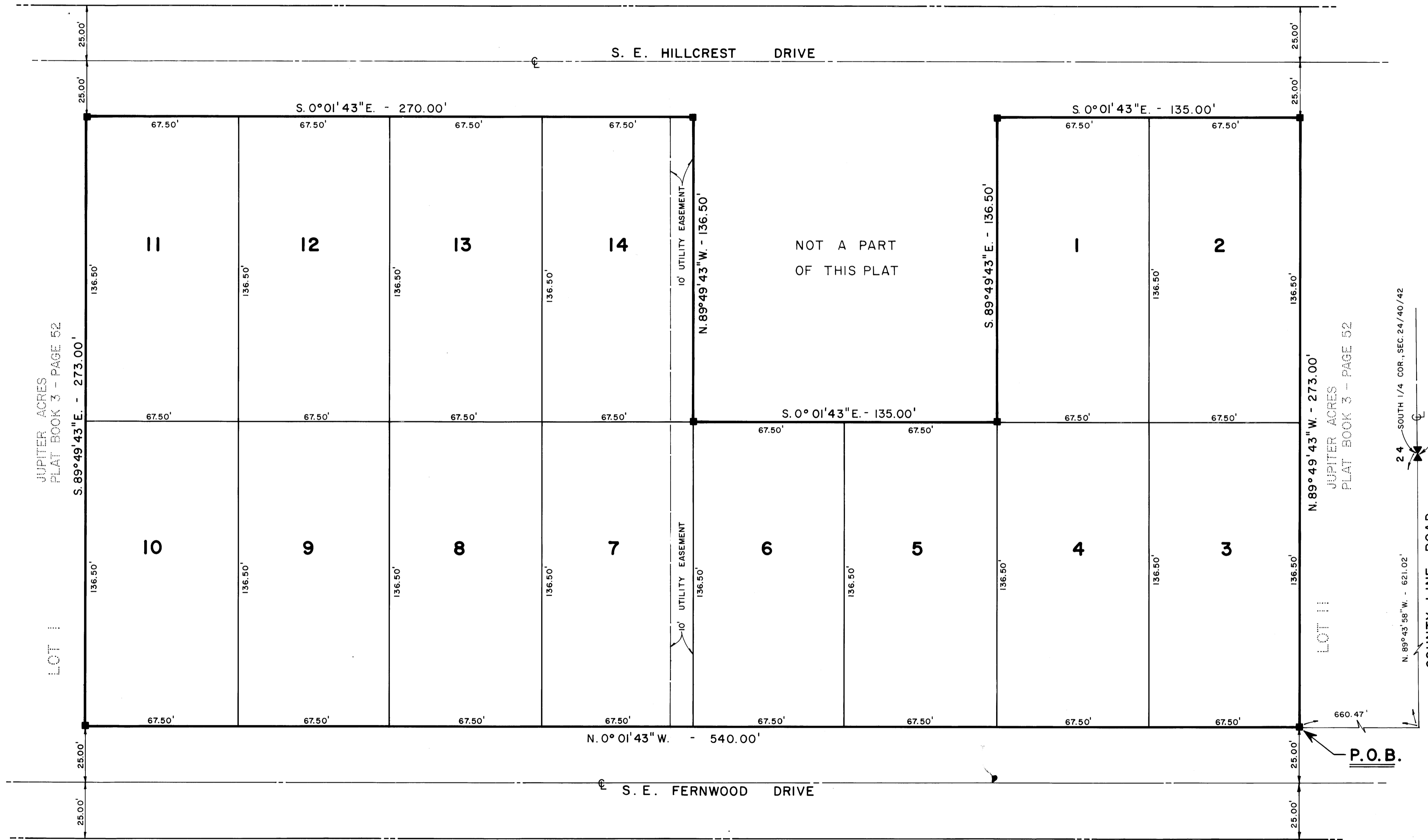
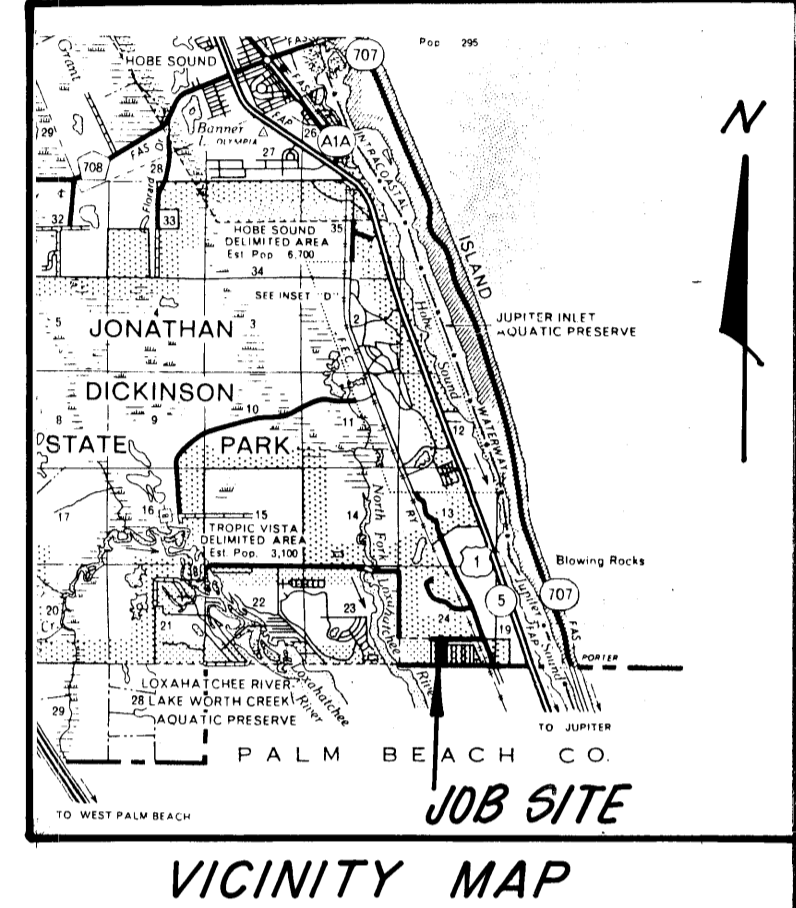
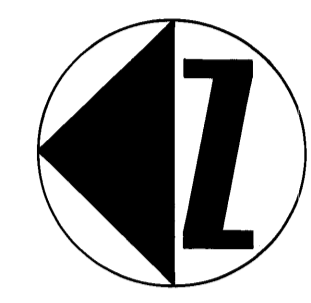
LYING IN SECTION 24, TOWNSHIP 40 SOUTH, RANGE 42 EAST
BEING A RE-PLAT OF LOTS 3, 5, A PORTION OF LOT 7 AND LOT 9 OF THE
PLAT OF JUPITER ACRES AS RECORDED IN PLAT BOOK 3, PAGE 52
RECORDS OF MARTIN COUNTY, FLORIDA

PL 88
PG 80

JULY 1981



JUPITER ACRES
PLAT BOOK 3 - PAGE 52



JUPITER ACRES
PLAT BOOK 3 - PAGE 52
S. 89°49'43" E. - 273.00'

LOT II
N. 89°49'43" W. - 273.00'
JUPITER ACRES
PLAT BOOK 3 - PAGE 52

SOUTH 1/4 COR., SEC. 24/40/42
COUNTY BRASS DISC
SOUTH LINE S.W. 1/4 SECT. 24,
TWP. 40 S., RANGE 42 E.

SOUTHGATE
PLAT BOOK 3 - PAGE 136

■ INDICATES P.R.M.

BEARING BASE
THE SOUTH LINE OF THE SOUTHWEST QUARTER
OF SECTION 24, TOWNSHIP 40 SOUTH, RANGE
42 EAST, IS TAKEN AS BEING N 89°43'58"W
AND ALL OTHER BEARINGS ARE RELATIVE THERE-
TO.

J. & J. BLUEPRINTERS, WEST PALM BEACH

LINDAHL, BROWNING & FERRARI, INC.
Consulting Engineers, Planners & Surveyors
426 INDIANTOWN ROAD 951 COLORADO AVENUE
JUPITER, FLORIDA 33458 STUART, FLORIDA 33494

2 2